

# THE ONLY PLANETARY MIXER DESIGNED AND MANUFACTURED IN THE U.S.A.

Mixer Systems PM .5 - 4.0 cu. yds.



## Standard Equipment

### Mixing Tank:

Steel all welded construction. Floor is 3/8" thick. Drum wall is 3/16" thick. Tank is welded to an I-beam frame with mounting holes. Frame also has lifting lugs for unloading and handling mixer.

### Liners:

Replaceable bolted wall and floor liners of abrasion resistant AR225 (225 Brinell hardness) steel. Floor and walls are 3/8" thick. Optional AR360 (360 Brinell hardness) floor liners are 1/2" thick.

### Mixer Cover:

Hinged access doors with neoprene rubber gaskets. Six hinged access doors. Doors equipped with over-center draw latches of malleable iron with corrosion resistant coating. Cover is bolted to outside of mixer drum and is rotatable 360 degrees.

### Safety Electrical Interlocks:

Motor emergency stop station and "cover down" limit switches provided. Ten-second start-up with audible alarm.

### Electric Motor:

Dual voltage, 230/460 volt, 3-phase, 60 hertz, 1800 RPM, totally enclosed, fan cooled, cast iron frame. Special voltages available upon request. Motor mounted on adjustable frame with two belt-tensioning bolts and four lock-down bolts.

### Transmission:

Modular Planetary type with heavy duty swing bearing and hardened gears. All components static lubricated. Transmission has a 5 year warranty.

### V-Belt Drive:

One banded belt with multiple grooves, fiber-reinforced molded rubber construction.

### Mixing Components:

2" diameter formed steel arms with abrasion resistant, replaceable urethane wear guards. Arms are fastened to supports with a 3/4" bolt in a self locking threaded hole. Arm support tubes are 3" diameter and bolted to a rotating case. Inside and outside scrapers are cast Ni-hard segments with slotted mounting to adjust for wear. Cast Ni-hard or rubber paddles are mounted to the mixing arms with 3/4" bolts.

### Discharge Door:

Steel door swivels horizontally to provide discharge opening at circumference of mixer. Outer edge of door is supported by steel rail. Door pivots on sealed self-lubricated sleeve bearings retained in cast steel housing. Up to four doors per mixer at 90-degree increments available. Standard is air-operated door with double solenoid valve, air line lubricator and moisture trap. Optional hydraulically operated door available.

### Paint:

High grade machinery enamel. Consult factory for special paint types, colors and procedures.



Mixer Systems 86,000 sq. ft. manufacturing facility located in Pewaukee, WI U.S.A.



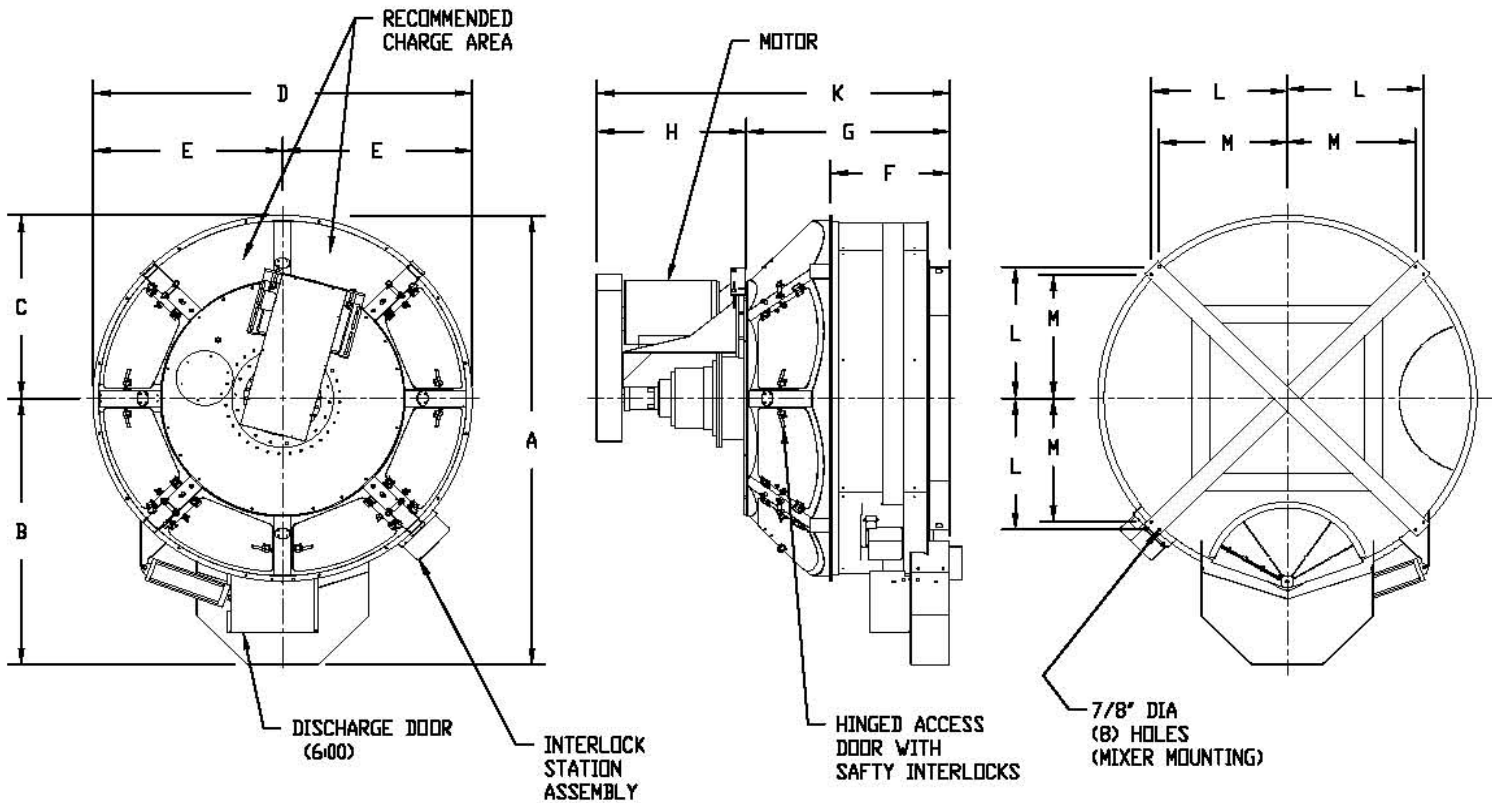
Mixer Systems, Inc.  
190 Simmons Avenue  
Pewaukee, WI 53072-0010  
www.mixersystems.com  
262-691-3100  
800-756-4937  
Fax 262-691-3184  
info@mixersystems.com



MADE IN USA

# Planetary Mixer Specifications

Mixer Systems PM .5 - 4.0 cu. yds.



## PLANETARY MIXERS

	MODEL NUMBER	PM 0.5	PM 1.0-1.5	PM 2.0	PM 3.0-4.0
A	OVERALL LENGTH	7'-6"	10'-6"	11'-5"	13'-11"
B	∅ TO DISCHARGE DOOR	4'-6"	6'-3"	6'-8"	8'-3"
C	∅ TO OUTSIDE OF TANK	3'-0"	4'-3"	4'-9"	5'-8"
D	OVERALL WIDTH	6'-0"	8'-6"	9'-6"	11'-4"
E	HALF WIDTH	3'-0"	4'-3"	4'-9"	5'-8"
F	HEIGHT TO DOORS	2'-8"	3'-3"	3'-6"	4'-0"
G	HEIGHT TO BASE OF MOTOR	4'-0"	4'-7"	5'-3"	6'-2"
H	MOTOR HEIGHT	2'-3"	2'-7"	4'-1"	4'-5"
K	OVERALL HEIGHT	6'-3"	7'-2"	9'-4"	10'-7"
L	MOUNTING HOLE LOCATION - OUTER	2'-1 7/8"	3'-1"	3'-5 1/4"	4'-0 7/8"
M	MOUNTING HOLE LOCATION - INNER	2'-0 1/4"	2'-10 1/8"	3'-2 3/8"	3'-10"