

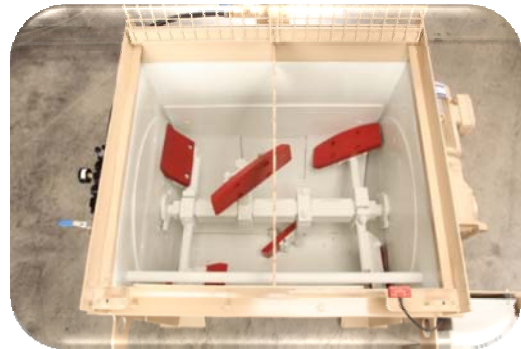
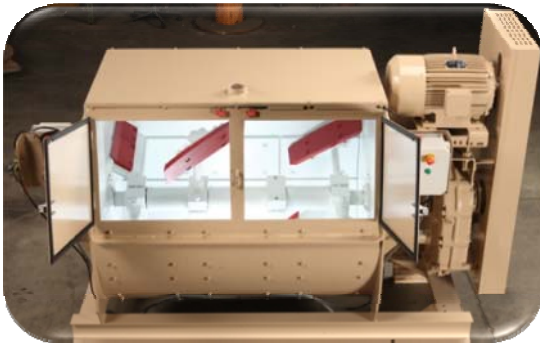
# REFRACTORY HORIZONTAL SHAFT MIXERS



**DUSTMASTER®**  
ENVIRO SYSTEMS

## **HORIZONTAL SHAFT MIXER**

Rugged, heavy duty provides years of service. Grated cover with optional bag breaker allows for easy service & cleanup inside mixer. Two large access doors on the front of mixer for inspection and cleaning.

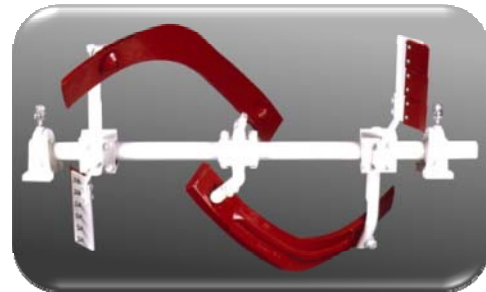
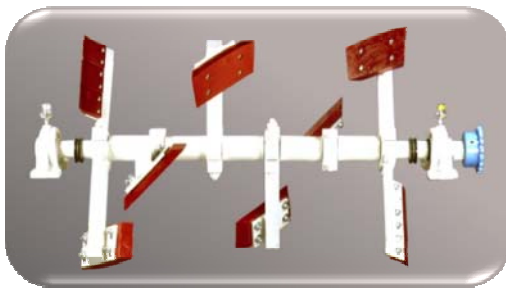


## **PADDLE MIXER**

Available with either Cast Ni-Hard mixing paddles or urethane paddles. Individual paddles provide a cross current, shearing action that forces materials into themselves for a homogeneous mix.

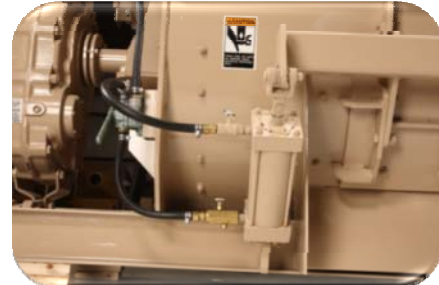
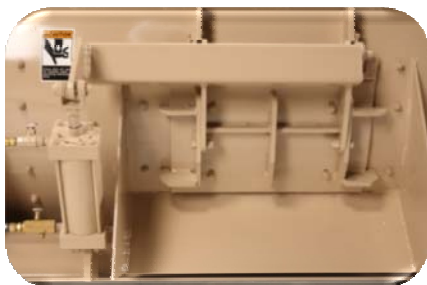
## **SPIRAL BLADE MIXER**

Spiral blades are cast Ni-Hard for long life, and provide a lift and fold mixing action that moves material from one side of the mixer to the other for a quick, thorough mixing action.



## **DISCHARGE DOOR**

Large discharge door assures a fast, clean discharge. Simple linkage and heavy duty urethane seal provide positive closing, regardless of the mix. Model 54 provides twin discharge cylinders. Pneumatic cylinders are standard, Hydraulic is optional.



# REFRACTORY HORIZONTAL SHAFT MIXERS

## STANDARD EQUIPMENT INCLUDES:

**MIXING TANK:** 1/4" drum wall on Models 8REF, 21REF and 30 REF; 5/16" drum wall on Models 54REF. 1/4" thick end wall on Model 8REF; 1/2" thick end wall on Models 21REF, 30REF & 54REF; 3" drain hole in center of drum bottom on all Models.

**LINERS:** All liners are replaceable, rectangular segments held in place with four (4) bolts and four (4) nuts with the bolt head countersunk into the steel liner Cast Ni-hard, 500 Brinell hardness and 1/2" thick on Model 21REF; 5/8" thick on models 30REF and 54REF.

**SHAFT ASSEMBLY:** Ni-Hard mixing blades or paddles (Models 8REF, 21REF & 30REF have (4) paddles, Model 54REF has (6) paddles) Ni-hard end wipers for mixer side walls. Replaceable wear guards for main shaft with sealed, self-aligning pillow block bearings. Lubrication cup with visual level indicator and spring operated feeder for proper lubrication. Models 21REF, 30REF, and 54REF can have either paddles or spiral blades. Model 8REF has paddles only.

**SHAFT SEALS:** Primary double labyrinth seal and secondary "cat" seal with machined split steel construction for field replacement. Both seals are purged with "Vellox 3" grease. 4-point remote lubrication panel included.

**DRIVE TRAIN:** Belt driven, shaft mounted reducers on Models 8REF, 21REF and 30REF; Planetary transmission on Model 54REF. Model 8REF has shaft mounted gear motor. Output shaft coupled directly to mixer shaft. Motor is totally-enclosed fan-cooled. Dual voltage (230/460), 3 phase, 60 hertz.

**DISCHARGE DOOR:** Located in rear of drum with rubber seal, Cylinder operated linkage with hand lever valve. Includes flow control valve for speed adjustment and air line lubricator and moisture trap.

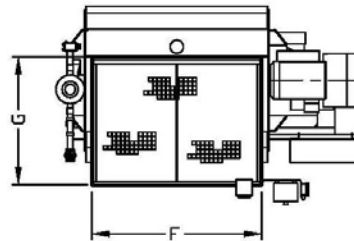
**COVER:** Hinged, grated cover with bag breaker. Includes "cover down" switch for interlock with motor control circuit.

**PAINT:** One color, yellow, high-grade machinery enamel. Consult factory for special types, colors and procedures.

## OPTIONAL EQUIPMENT INCLUDES:

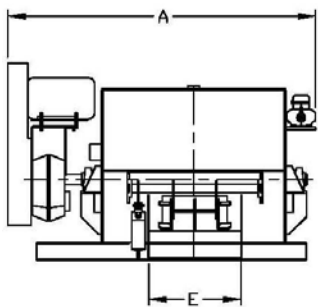
• Automatic lubrication for shaft seals • Shaft and arm cleaning rings • Welded in place fork lift pockets • Urethane mixing paddles in lieu of cast Ni-hard • Bottom clean-out door • Single or double solenoid valve in lieu of hand lever valve for remote control of discharge door • Motor starter (installed) • Mixer stand • Left-hand drive in lieu of standard right-hand drive • Sheet steel cover with

MIXER DIMENSION CHART								
MODEL	A	B	C	D	E	F	G	MIXER WEIGHT
8REF	62"	47"	47"	47"	17"	36"	35"	1,875 LBS.
21REF	93"	65"	54"	62"	24-3/4"	55"	43"	3,500 LBS.
30REF	106"	77"	62"	68"	31-1/2"	58"	44"	5,500 LBS.
54REF	131"	85"	72"	73"	37-1/2"	69"	46"	11,000 LBS.

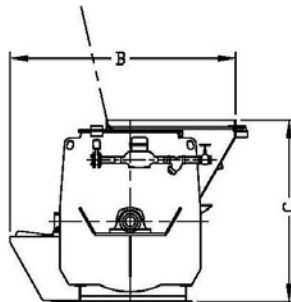


MIXER TOP VIEW

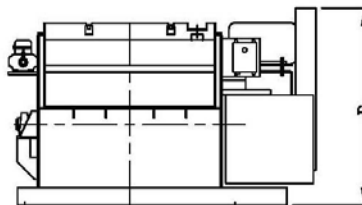
MIXER CAPACITY CHART		
MODEL	BATCH CAPACITY	MOTOR HP
8REF	3 CU. FT./550 LBS.	7-1/2
21REF	11 CU. FT./2,000 LBS.	15
30REF	21 CU. FT./3,900 LBS.	30
54REF	40 CU. FT./7,400 LBS.	50



MIXER DISCHARGE SIDE VIEW



MIXER END VIEW



MIXER CHARGE SIDE VIEW

**DUSTMASTER®**  
**ENVIRO SYSTEMS**



**Mixer Systems, Inc.**

190 Simmons Avenue • Pewaukee, WI 53072  
 phone (262) 691-3100 toll free (800) 756-4937  
 fax (262) 691-3184 info@dustmaster.com

[www.dustmaster.com](http://www.dustmaster.com)