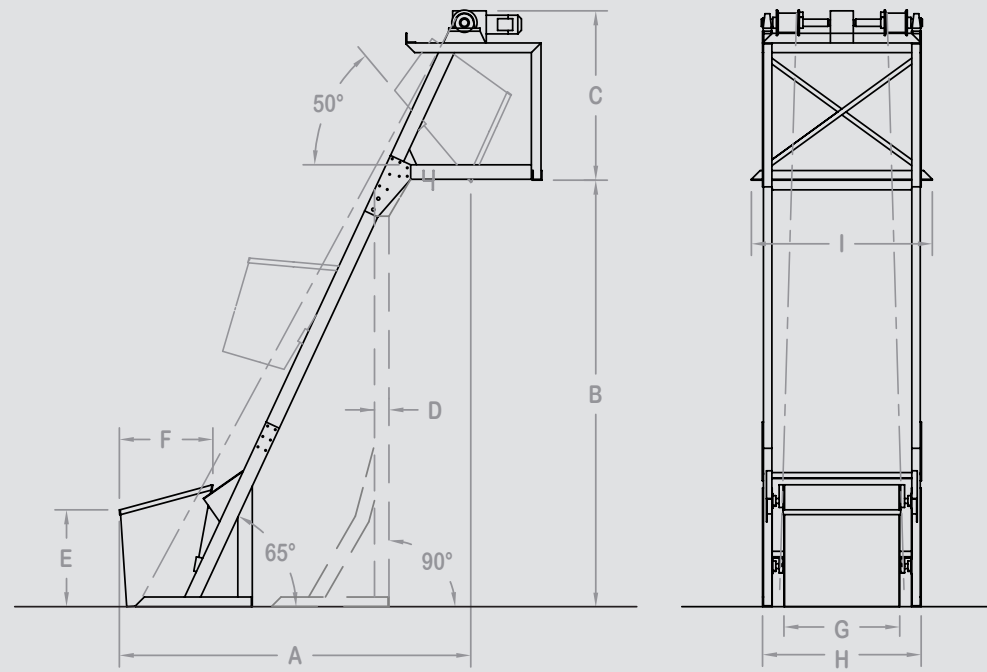


SKIP HOIST DIMENSIONS



SKIP SIZE	MOTOR HP	TRAVEL FPM	A	B	C	D	E	F	G	H	I
10 CU. FT.	2	27	VARIABLE	VARIABLE	70"	6"	30"	32"	23-1/2"	31-3/4"	46-1/4"
20 CU. FT.	3	27	VARIABLE	VARIABLE	75"	6"	30"	32"	47-1/2"	65-3/4"	71"
30 CU. FT.	5	27	VARIABLE	VARIABLE	75"	6"	40-1/4"	38-5/8"	47-1/2"	65-3/4"	71"
42 CU. FT.	7-1/2	27	VARIABLE	VARIABLE	78"	6"	46-1/2"	40-3/8"	47-1/2"	65-3/4"	71"
54 CU. FT.	7-1/2	28	VARIABLE	VARIABLE	91-3/8"	6"	46-1/2"	42-3/4"	63-1/2"	85-3/4"	92"
81 CU. FT.	10	19	VARIABLE	VARIABLE	109-1/2"	6"	54"	51"	65-1/2"	85-3/4"	92"
100 CU. FT.	10	19	VARIABLE	VARIABLE	109-1/2"	6"	60"	51"	65-1/2"	85-3/4"	92"

MADE IN THE USA FOR YOUR WORLD

Mixer Systems has been manufacturing equipment for the concrete products and other related industries since 1979. Today our systems are at work in some 60 countries around the world. An 86,000 square-foot facility houses advanced product planning, state-of-the-art manufacturing, and the capability of designing and constructing concrete batch plants from the ground up. Our product line is the largest family of equipment in the industry, built with American reliability to stand up to the challenges of your world.



All under one roof at Mixer Systems headquarters: Design, engineering, manufacturing and a multi-million dollar parts inventory.

DUSTMASTER
ENVIRO SYSTEMS

190 Simmons Avenue
P.O. Box 10
Pewaukee, WI 53072
info@dustmaster.com
262-691-3100 | dustmaster.com
1-800-756-4937 Toll Free in USA

MIX
Mixer Systems, Inc.

DM 50 050225. Printed in USA.
© DustMASTER Enviro Systems

DIRECT DRIVE SKIP HOIST DOES THE HEAVY LIFTING



ALL-PURPOSE, MULTI-MATERIAL HANDLING.

Compact, space-saving skip hoists provide fast, dependable lifting for all material handling operations. Charge mixers, load concrete, lift barrels, containers, scrap metals, grain. Its uses are endless. So are its design possibilities. We can modify and engineer the skip hoist to accept all types and sizes of containers or loose materials. Capacities are available from 3 to 100 cu. ft. Larger capacities are also available upon request.

Features for versatile, dependable operation.

- Low horsepower, energy-efficient motor
- Track pins
- Compact design
- Twin hoisting cables
- Safe-drive mechanism
- Heavy-duty construction
- Roller track design
- Unobstructed bucket opening
- Automatic operation
- Customizable design
- Vertical or inclined track

Fast, safe lifting that fits in anywhere.

DUSTMASTER
ENVIRO SYSTEMS

PROUDLY
MADE IN
AMERICA

DIRECT DRIVE SKIP HOIST

Loaded with hard-working features

Compact, safe-drive mechanism is mounted within the hoist frame. This lowers headroom needed and simplifies service and maintenance. Drive motor has safety brake to hold bucket in case of power failure.

Twin hoisting cables ensure bucket stability and smoother, more efficient hoisting. No additional cable length is required than other designs. Grooved drums prevent cable climbing and extend cable life.

Heavy-duty construction assures long life and stability of the oversized frame and track. Each is built to provide maximum production with minimum maintenance.

Compact design fits into tight work areas, eliminates bulky overhead loading mechanism. Overall height is only a few inches higher than bucket when raised to dumping position.

A low horsepower, energy-efficient motor is all that's needed to raise the bucket. Bearings in bucket rollers glide smoothly along the track to reduce friction, providing power savings and lower electrical costs. Low hp is a fraction of that needed by competitive models.

Roller-track design permits the bucket to discharge under the hoisting mechanism and further out over the hopper. This reduces material segregation.

Unobstructed bucket opening permits easy loading and cleaning. There is no "bail."

Track pins hold bucket in convenient position for easy greasing of rollers. They also serve as a safety feature to prevent lowering of bucket when personnel are maintaining the machine.

Bucket tips back from roller tracks in material charging position. This puts bucket into ideal load position and eliminates a deeper pit required by conventional skip hoist designs.

Automatic operation adapts to automatic loading systems and allows operator to perform other close-by work assignments. Manual control switch will stop bucket in either travel direction.

BUILT TO KEEP SAFETY AND PRODUCTIVITY AT THE TOP



Bottom-dump bucket allows for easy, direct mixer feed



Roll-over bucket conveys materials in vertical and inclined applications



High-torque motor and direct drive gearbox handle the heaviest loads



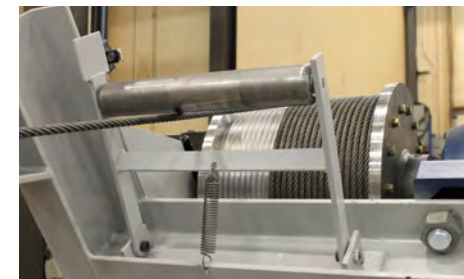
Energy efficient design of hoist gearbox and motor unit



Machined cable drum prevents cable climbing and flattening



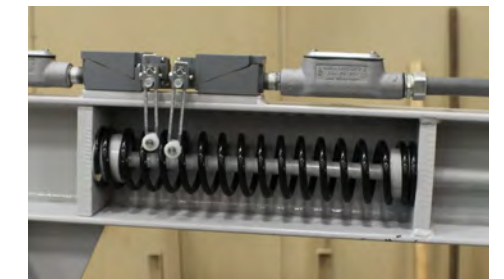
Machined track wheels with bearings roll smoothly



Indicators detect cable slack



Bucket position limit switches are adjustable



Heavy-duty spring assists bucket return



Custom designed bucket and track angles



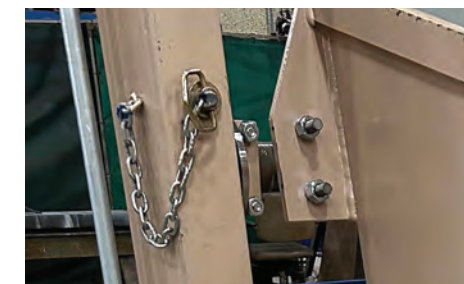
Detachable bucket design



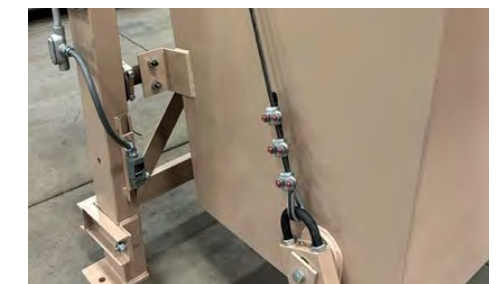
Standard bucket capacities of 3 to 100 cu. ft.



PLC based hoist controls



Safety track pins protect operator during maintenance



Limit switches set bucket loading position